

ASSEMBLY INSTRUCTIONS

MODEL.#5146 - 542/543/561

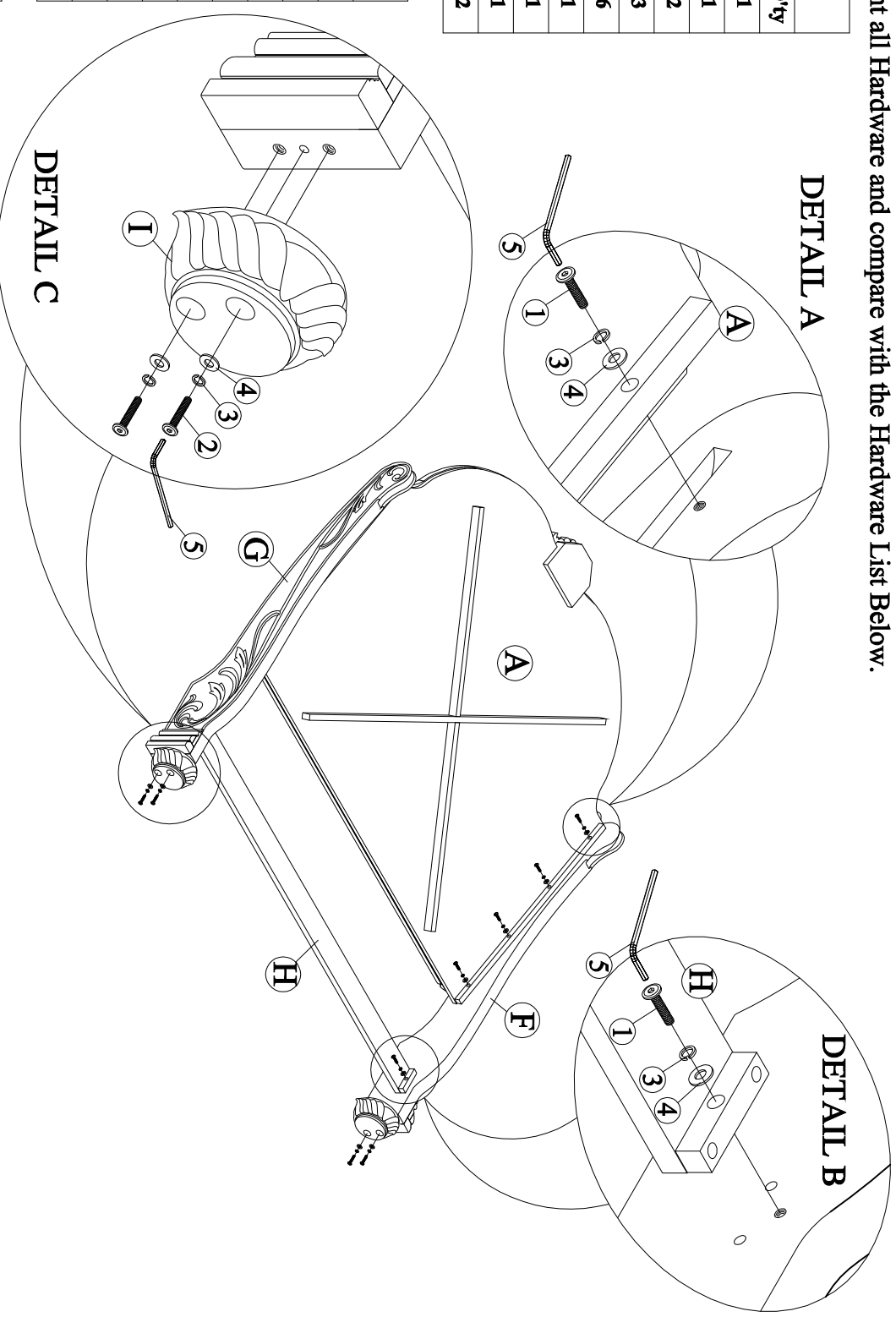
Description : 6/6 Sleigh bed Headboard - Footboard - Rail

Thank you for purchasing this quality product. Be sure to check all packing material carefully for small Hardware which may have come loose inside the carton during shipment. Identify and count all Hardware and compare with the Hardware List Below.

Component List		
NO.	Descriptions	Q'ty
A	Headboard (Packed Separately)	1
B	Footboard (Packed Separately)	1
C	Bed Rail (Packed Separately)	2
D	Bed Slat (Packed inside Footboard)	3
E	Bed Support Leg (Packed inside Footboard)	6
F	Left Post HB (Packed inside Headboard)	1
G	Right Post HB (Packed inside Headboard)	1
H	Stretcher (Packed inside Headboard)	1
I	Leg HB (Packed inside Headboard)	2

Hardware List 1 & 2 (Packed inside Headboard & Rails)		
NO.	Descriptions	Q'ty
1	Allen Head Bolt Ø5/16x1-1/2"	10
2	Allen Head Bolt Ø5/16x2-1/2"	04
3	Lock Washer Ø5/16xØ14x1mm	22
4	Flat Washer Ø5/16xØ18x1mm	22
5	Allen Key 5mm	1
6	Hexagonal nut Ø5/16"	8
7	Thread Bolt Ø5/16x3-1/4"	8
8	Allen Wrench 12mm	1

Hardware List 3 (Packed inside Footboard)		
NO.	Descriptions	Q'ty
9	RH Screws Ø8mm x L1"	6



Step1: Attach Stretcher (H) and Headboard (A) to the Left Post HB (F) with allen head bolts (1), lock washer (3) and flat washer (4), using Allen key (5). Do not tighten. See DETAIL A and B.

Step2: Repeat assembly with Right post HB (G). Tighten all bolt with allen key (5).

Step3: Attach Leg HB (I) to under of post HB with allen head bolts(2), lock washer (3) and flat washer (4). Tighten all bolt with allen key. See DETAIL C.